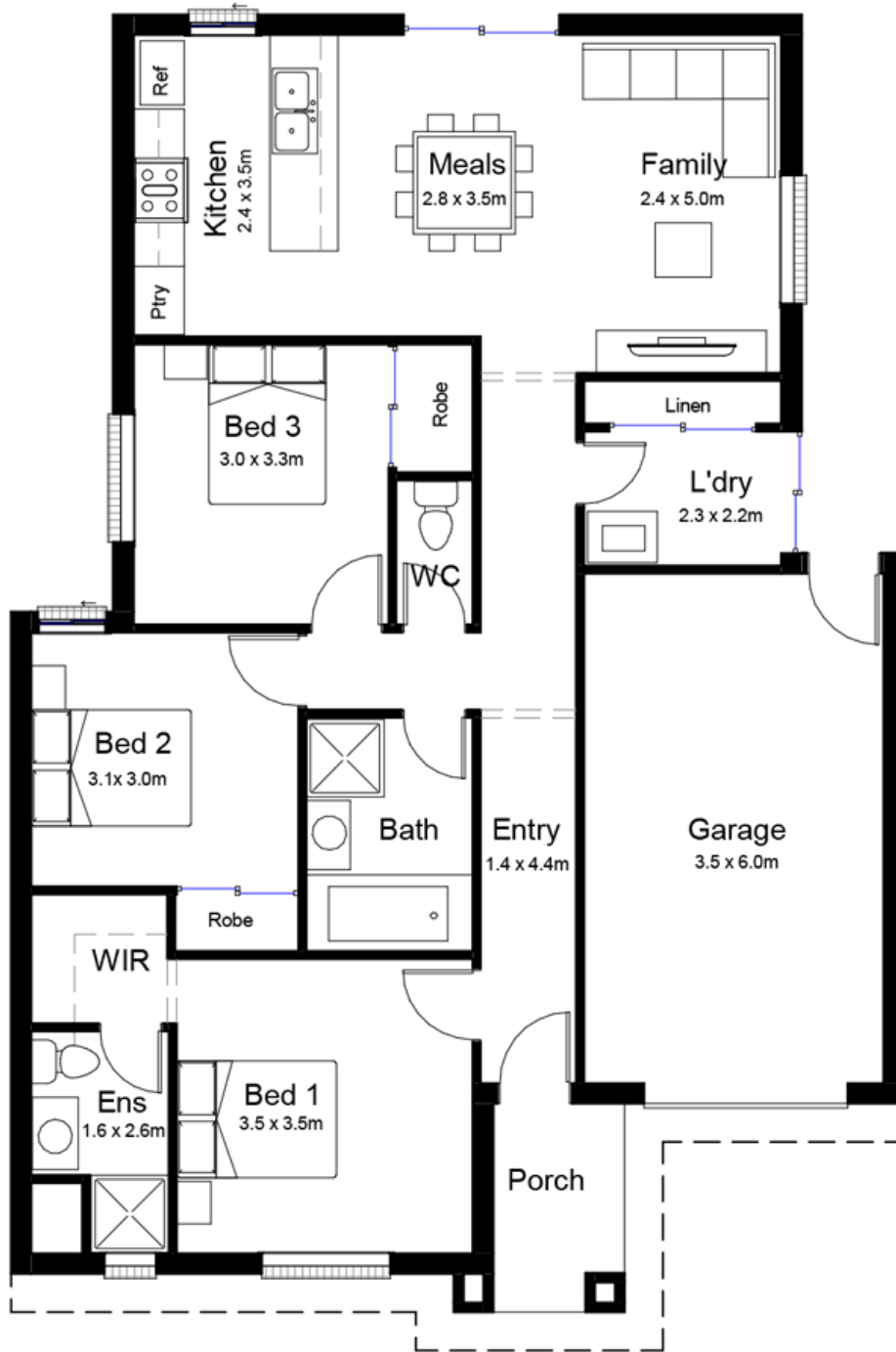


# ROME 15



10.5M DESIGNS

This stylish and spacious footprint is the ideal home for young families looking for open plan modern living. The kitchen dining/living layout to the rear in addition to the large sliding doors gives a seamless connection to outside, perfect for entertaining. Escape to the master suite which is sectioned off from the kids sleep zone but conveniently not too far.

## TOTAL AREAS

GROUND FLOOR	112.15m <sup>2</sup>	MINIMUM LOT WIDTH	10.5m
GARAGE	23.6m <sup>2</sup>	MINIMUM LOT DEPTH	21m
PORCH	4.00m <sup>2</sup>	EXTERIOR LENGTH	14.80m
ALFRESCO		EXTERIOR WIDTH	10.50m
TOTAL	139.75sqm   15.04sq		