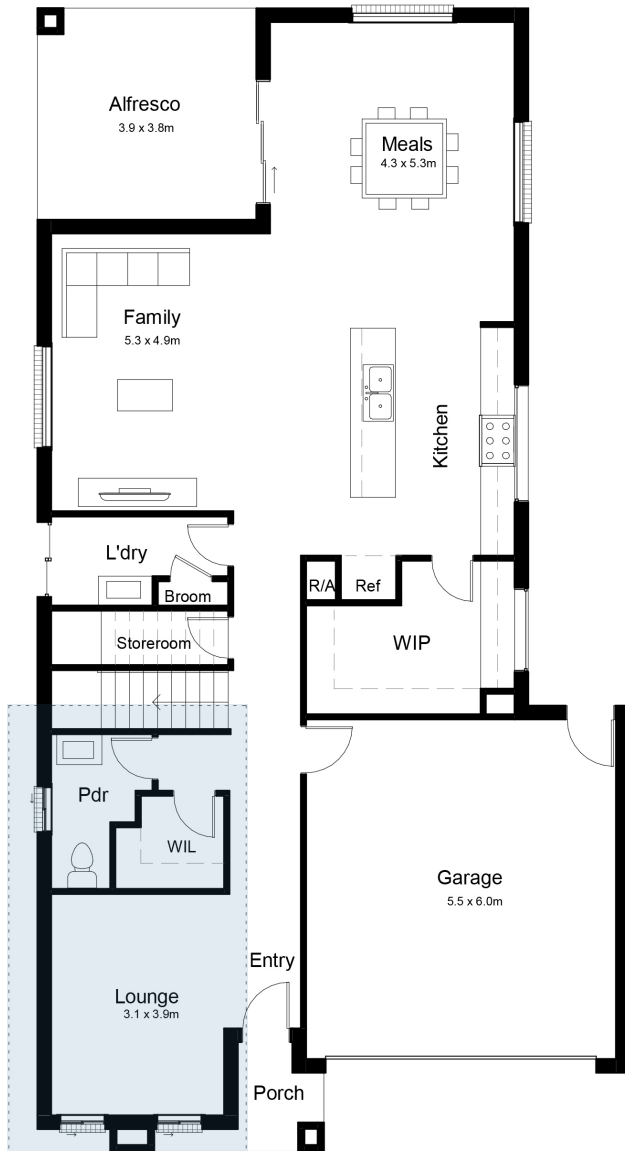


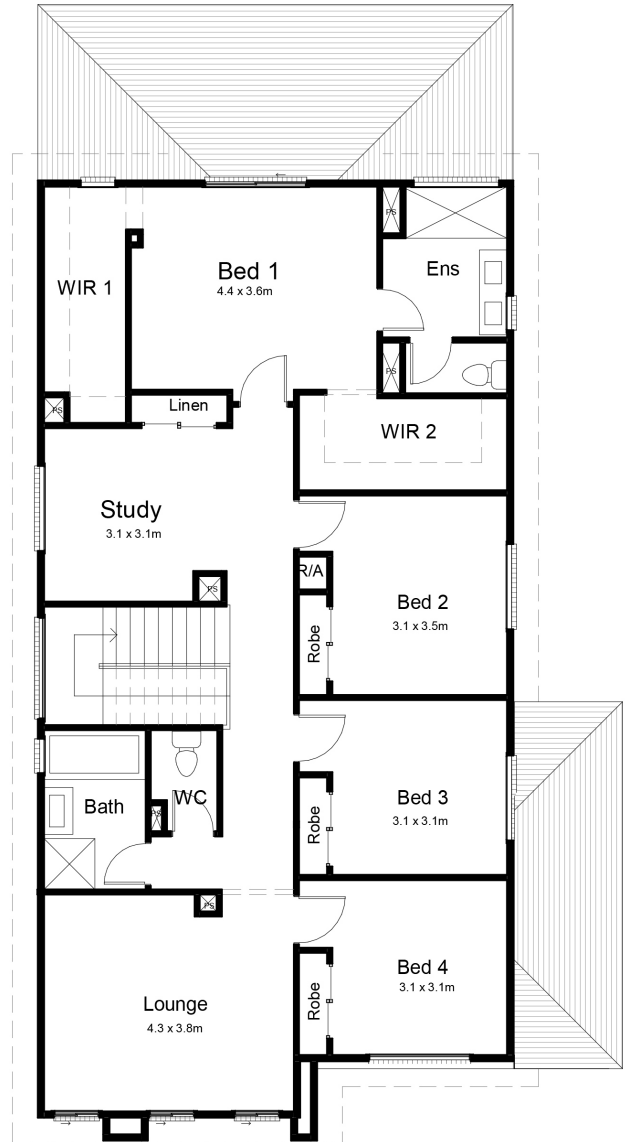
# MANCHESTER 35



GROUND FLOOR



FIRST FLOOR



**RE-DESIGN OPTIONS**  
BED 5 OPTION  
REFER TO PAGE 70

This superb design has details needed to experience convenient and luxury living while also delivering a feeling of warmth and cosiness a home should have. The main living area of the home is pleasingly inviting, while the kitchen footprint is going to make cooking a dream.

The Manchester 35 fits on a 12.5 meter width block. Please contact our team to learn more about the Manchester range.

## TOTAL AREAS

GROUND FLOOR	269.04m <sup>2</sup>
GARAGE	36.5m <sup>2</sup>
PORCH	3.56m <sup>2</sup>
ALFRESCO	11.4m <sup>2</sup>
MINIMUM LOT WIDTH	12.5m

MINIMUM LOT DEPTH	28m
EXTERIOR LENGTH	19.85m
EXTERIOR WIDTH	10.50m
TOTAL	320.5sqm   34.50sq