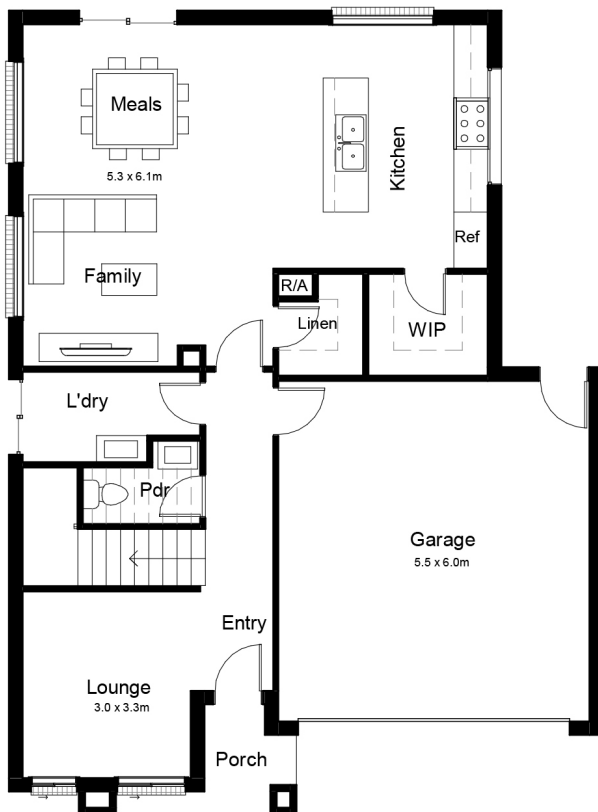


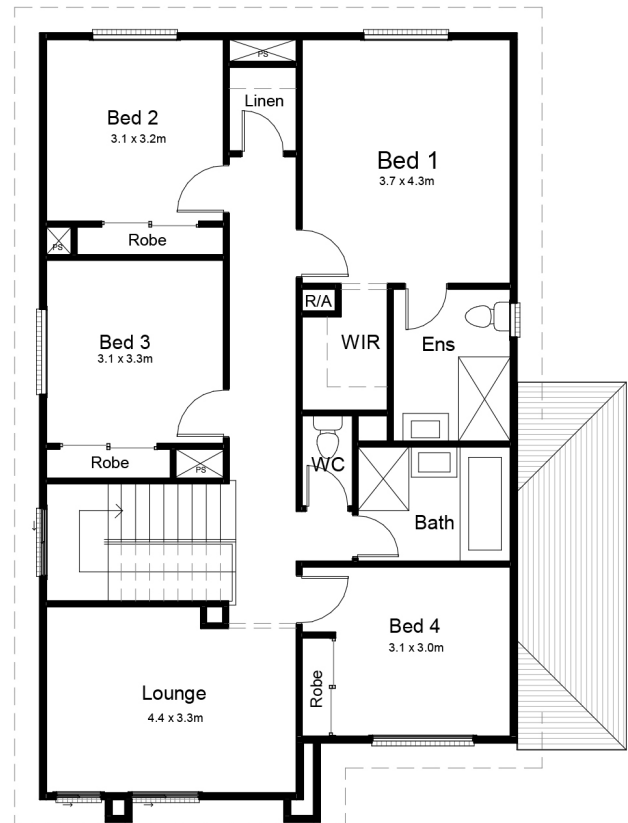
# MANCHESTER 26



**GROUND FLOOR**



**FIRST FLOOR**



This superb design has details needed to experience convenient and luxury living while also delivering a feeling of warmth and cosiness a home should have. The main living area of the home is pleasingly inviting, while the kitchen footprint is going to make cooking a dream.

The Manchester 26 fits on a 12.5 meter width block. Please contact our team to learn more about the Manchester range.

## TOTAL AREAS

GROUND FLOOR	201.48m <sup>2</sup>
GARAGE	36.5m <sup>2</sup>
PORCH	3.56m <sup>2</sup>

MINIMUM LOT WIDTH	12.5m
MINIMUM LOT DEPTH	21m
EXTERIOR LENGTH	13.80m
EXTERIOR WIDTH	10.50m

TOTAL	241.54sqm   26.00sq
-------	---------------------